

32 ft 2019 World Cat 320 DC, FISHIN' LIKE A HAWK

US\$295,000

Chester, Connecticut, United States



Boat Details

Make:	World Cat	Class:	Power Catamaran	Guest Heads:	1
Model:	320 DC	Hull Material:	Fiberglass	Fuel Type:	Gas/Petrol
Year:	2019	Beam:	10 ft 6 in	Max Speed:	45 mph
Length:	32 ft 2 in	Boat Location:	Chester, Connecticut, United States		
Price:	US\$295,000	Name:	FISHIN' LIKE A HAWK		
Condition:	Used	Guest Cabins:	1		



Leslie Quarrier | Essex Yacht Sales

Safe Harbor Dauntless Shipyard, Essex, Connecticut, United States

Tel: **860-767-3013** Fax: **860-760-6797**

leslie@essexyachtsales.com

www.essexyachtsales.com

Description

FISHIN' LIKE A HAWK is a truly fine example of the famed **World Cat 320 DC** (dual console), power cat.

Equipped with many options and recent upgrades including:

- Premium electronics suite with HD Radar
- Dometic Optimus 360 System with Joystick control
- A/C and Heat
- Diesel Generator
- Inverter
- Solar Panel
- Seating for up to 14

Plus a full array of the very best outriggers, rocket launchers, rod holders and fishing accessories, *this boat has it all*.

Unlike many Florida boats, FISHIN' LIKE A HAWK has been lightly used during the all-too-short New England summers, with only 295 engine hours. This one-owner boat has been professionally maintained, in one of Connecticut's finest yards.

Manufacturer provided statement:

This 320DC dual console offers it all - with style. With rakish lines and an attention to detail, the 320DC is designed to look good while bringing you years of fun and dependable service. And since it's a World Cat you can count on a smoother, better ride in virtually any conditions.

Comfort and luxury. Versatility and ruggedness. A spacious yacht for your family and friends, and a high-performance sport fish for you.

Information & Features

2019 Yamaha F300NCA2 (Engine 1)

Engine Type:	Outboard	Power:	300 hp
Fuel Type:	Gas/Petrol	Propeller Material:	Stainless Steel
Engine Hours:	295		

2019 Yamaha F300NCA2 (Engine 2)

Engine Type:	Outboard	Power:	300 hp
Fuel Type:	Gas/Petrol	Propeller Material:	Stainless Steel
Engine Hours:	295		

Dimensions

LOA:	32 ft 2 in	Min Draft:	1 ft 4 in
Beam:	10 ft 6 in	Freeboard:	2 ft 2 in
Max Bridge Clearance:	9 ft 8 in		

Weights

Dry Weight:	12,500 lb
-------------	-----------

Speed

Cruising Speed:	30 mph
Max Speed:	45 mph

Seating

Seating Capacity:	14
Max Passengers:	14

Tanks

Fuel:	2 x 140 gal
Fresh Water:	1 x 45 gal
Holding:	1 x 15 gal

Accommodations

Guest Cabins:	1
Guest Heads:	1

Other

Hull Shape:	Catamaran
Builder:	World Cat

Additional Equipment

- Joystick Control

Bow

- Lewmar Pro Series free-fall windlass with foot switches
- 22 lb anchor, with 15 ft chain and 300 ft rode
- Fresh water washdown hose at anchor locker
- Seating for six at (2) double-wide lounge seats, to port and starboard, with storage below
 - Seats have angled cushioned backrests and headrests as (2) sun beds 30" x 5'
 - Flip-down armrests on inboard side
 - (2) filler cushions to make a full-size sun bed
- Port and starboard gunwale inserts with (3) cup holders each side, storage bins and JBL Audio speakers
- (2) Duplex USB ports
- (2) Rod holders
- Bugee socket
- Socket for removable table
- Courtesy lights
- Storage box below portside forward seat
- 300-quart insulated storage starboard side
- Bow anchor lockers
- (4) flush-mounted pull-up cleats and bow lights
- Barely used bow bimini with (2) stainless steel supports

Port Console Berth

- (3) port lights topside and inboard, with shades
- Stylish interior with 2-tone vinyl headliner and laminated cabin sole
- Aft facing seat for two that converts to a 72" long berth
- Cedar-lined hanging locker
- Large storage below berth
- Microwave
- 22" HD LED TV
- AC/DC electrical panel in aft bulkhead
- (2) Rod Holders
- (2) JBL Audio speakers
- (2) LED overhead lights
- Reading light
- A/C and Heat control
- Duplex 110VAC outlet

Starboard Console Head and Shower

- Jabsco electric marine head
- 15 gal. holding tank, with lockable overboard discharge valve (for use where permitted)
- Tank monitor
- Bilge pump controls
- Lift up teak grid shower seat
- Hot and cold pressure water, wash basin with Corian counter and storage below
- Shower attachment
- Floor drain with sump pump
- Freshwater 45 gal. tank
- 6 gal. hot water tank
- 110VDC duplex GFCI outlet
- (2) LED lights
- Courtesy lights
- Mirror with access behind to rear of helm electronics
- Wiring closet
- Storage cabinet

Helm

- Edson tilt wheel
- Optimus 360 System with electronic steering and joystick
- Split Dutch-style center companionway door and hinged center windshield for walk-through access to foredeck
- (2) drink holders and color-coordinated custom dash panel
- Compass
- Lighted toggle switches
- Fire extinguisher boxes port and starboard
- Custom port navigation station with rail to hold charts and devices
- Adjustable helm seat 28" wide with inboard pull-up armrest and single bolster system, with waste bin under
- Footrest
- (2) cupholders
- 12 VDC outlet and space for cell phone stowage
- (2) duplex USB ports
- 12,000 BTU/hr. reverse cycle AC/Heat unit for berth, head and cockpit

Pilot House

- Raised deck to accommodate centerline 250-quart fish box compartment or storage locker approx. 50" x 30" x 10"
- Portside cushioned seating for four. Multi-way 36" wide seats easily convert to:
 - (2) forward facing seats
 - Forward and aft facing seats (Aft seat with footrest)
 - Lounge seating with dual facing seats with removable table between
 - Large berth 36" x 6' 9"
- Storage below forward port side seat
- Forward seat storage drawer opens inboard
- Starboard hospitality center
 - Isotherm DR 49 1.75 cu. ft. refrigerator(12VDC/110VAC)
 - Sink with hot and cold pressure water and storage drawers below
 - Kenyon 1.3kW electric grill
 - Pot locker with drain
- Drop-down TV (12 VDC) with additional connection to Garmin to stream charts/radar etc.
- Fiberglass hardtop
- (2) forward facing hatches for light and ventilation
- Tinted glass windshield and side windows
- Strataglass™ inserts
- Matching hardtop underside to hull color
- Rod Holders overhead
- Original snap-in woven carpeting throughout. (Currently in storage and lightly used)
- Courtesy lights
- (6) overhead LED lights
- Duplex USB outlet to port
- (2) JBL Audio speakers
- (2) cup holders to port
- (8) overhead rod holders
- (2) outrigger rotator levers
- (3) piece full aft enclosure for three season use, Stamoid and Strataglass™ for unrestricted vision

Cockpit

- Aft portside hot and cold shower
- Cockpit starboard entry door with security latch
- Port storage cabinet in sidewall, with fire extinguisher
- (4) gunwale-mounted rod holders
- (2) cup holders
- 47" wide aft starboard transom seating for two, with access under to generator, inverter/charger, batteries and engine hydraulics
- Extra rod holders across transom
- Offset starboard transom walk-through with door and safety latch
- 35 gal. live well at portside aft
- Raw water washdown
- Underwater transom lighting
- Battery switch panel with parallel emergency start function
- Galvanic isolator system
- Shore power system (30 A)
- Transom door with safety latch
- Aft swim platform with folding aluminum ladder
- Tackle storage drawers under pilot house seat
- Duplex 110VAC GFCI outlet
- Hot and cold shower
- Engine freshwater flush connection
- Shore power breakers
- (6) rocket launcher rod holders on roof, (3) rocket launcher rod holders on transom, (7) other rod holders on transom and in gunwales
- Ensign socket on roof
- (2) 30A shore power connections
- Relocated custom fresh water fill to port
- LED cockpit lights
- LED spreader-type cockpit lights
- Courtesy lights
- Rear-facing video camera
- Aft bimini (never used)

Mechanical

- (2) Yamaha 300 HP Model F300NCA2 4-stroke motors (approx. 295 hour) S/N 1059427 and 1059366
- 4.2L V-6 with multi-point fuel injection, variable camshaft timing, and integrated electrically actuated steering
- Custom fresh-water flush for both engines, with single spigot. Engines *a/ways* flushed after every run
- Full service history available from 2021
- Optimus 360 System with Electronic Steering and Joystick
- Fischer Panda 4.2kW generator

Electronics

- (2) Garmin 12" touch screen MFD
- Garmin HD Radar
- Yamaha engine display
- Garmin Autopilot
- Garmin depth sounder with high power extended depth
- Garmin *Active Captain* with remote access (new 2024)
- Optimus display
- Mastervolt Easy View 5 System Monitor
- Garmin GHS 11 wired hand set for VHF 210 radio (new 2024)
- (2) HD LED TV
- Fusion MS-NRX300 marine entertainment system with (6) JBL Audio speakers, remote and Bluetooth
- Galaxy World Band cellular phone antenna (new 2024)
- Terrestrial TV antenna
- Sirius/ XM/Weather satellite antenna (new 2024)
- GPS antenna
- Roof-mounted forward and aft facing GC 200 marine video cameras (new 2024)

Electrical

- Fischer Panda 4.2 kW diesel generator with 10 gal. fuel tank (36 hours)
- 12,000 BTU/hr. reverse cycle A/C and Heat
- Battery switch panel with engine battery parallelling option
- Shore power system (30 A) with galvanic isolator
- LED floodlights at Bow and Stern
- AC/DC breaker panel
- Custom Marine 420W rigid HJT solar panel (new 2024)
- Xantrex Solar MPPT 30A charge controller (new 2024)
- Group 31 AGM battery, 105Ah (new 2024)
- (2) Odyssey AGM 470FTT batteries, total 428 Ah (new 2024)
- Lewmar Pro Fish free fall 12VDC windlass with local and remote controls
- Mastervolt Combimaster Inverter/Charger 12V/3000W -160A with helm display (Easy View 5 System Monitor)
- 6 gal. electric water heater and tank

Custom Fishing Accessories

- Outriggers with rotator levers
- Rocket Launchers
- Rod Holders
- Tackle lockers
- Fish Finder
- Upgraded high power Depth Sounder/Fish Finder
- Fish box
- Bait well

Hull

- Topsides blue gelcoat
- House and deck white
- *Fishin' like a Hawk* decals (removable)
- Bottom paint details
- High-grade 316 stainless-steel deck fittings

Construction

- Finite Element Analysis (FEA) computer aided hull design (CAD)
- 100% vinylester barrier coat
- Bi-directional and tri-directional knitted fiberglass cloth, pre-cut by hand into precise shapes engineered for each boat model
- Fiberglass cloth hand-applied to the mold to assure a stronger, more durable laminate
- Fiberglass cloth tayers overlapped in water shock areas
- Thick 36-ounce woven roving cloth layer laminated from chine to chine
- High-density composite cores in structural bulkheads and stringers, impervious to water absorption and rot
- Foam-filled strategic cavities for enhanced flotation and sound and thermal insulation
- Transom reinforced with durable aluminum plates in engine mount areas for extra strength
- 10-year structural integrity hull warranty

Disclaimer

The Company offers the details of this vessel in good faith but cannot guarantee or warrant the accuracy of this information nor warrant the condition of the vessel. A buyer should instruct his agents, or his surveyors, to investigate such details as the buyer desires validated. This vessel is offered subject to prior sale, price change, or withdrawal without notice.



Comprehensively appointed helm station



Instrument panel, with great 360 degree visibility



Port seating and nav station



Port seating in dinette arrangement



Port seating in forward facing arrangement



Port seating converted to a large berth



Looking aft from the bow, with the pilot house door closed



Looking aft from the bow, showing the seats/sun beds, and pilot house door open



Elevated view of the bow, showing twin seats/sun beds and table



Another view of the bow



Elevated view of the aft cockpit



Starboard boarding gate



Sink, grill, and refrigerator



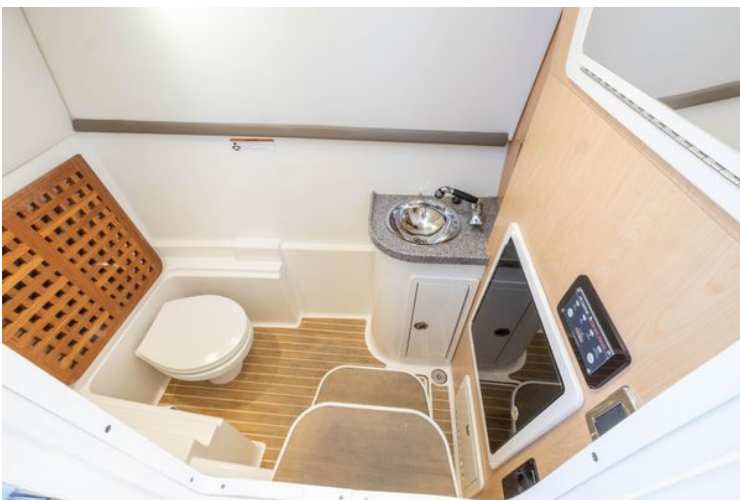
Galley with storage below



Port console in seat configuration



Port console in berth configuration



Spacious private head and shower with all amenities



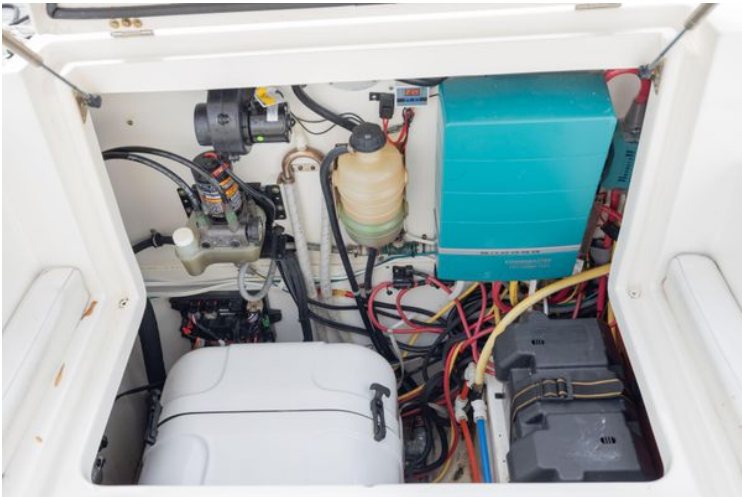
Spacious private head and shower with all amenities, with shower seat folded down



Twin Yamaha 300s, sturdy folding swim ladder



Radar, solar array, outriggers, rocket launchers



Compartment with generator, inverter/charger, batteries and hydraulics



Live well



Battery switches



World Cat 320 DC



Head on view



Departing view



First Mate at Lookout



Wide open at 45 mph, cruise at 30-35.